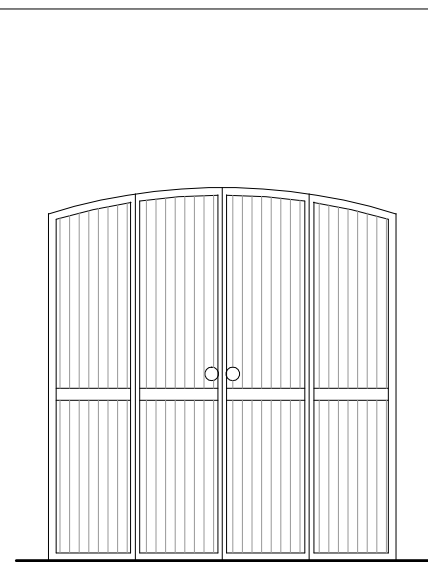
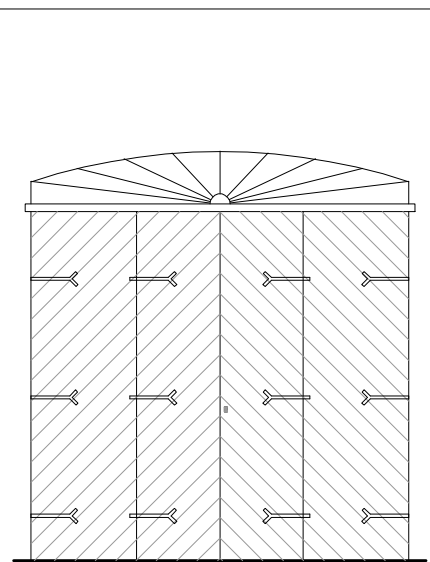
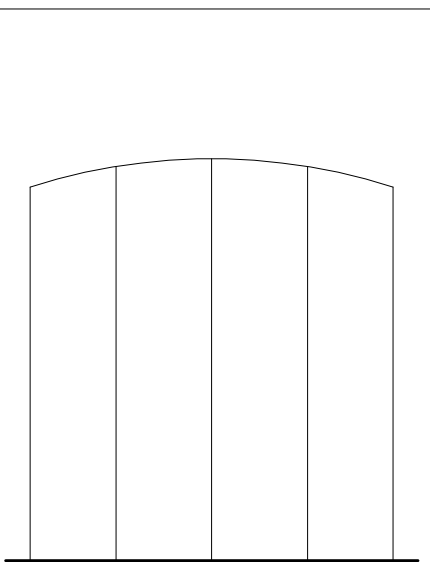
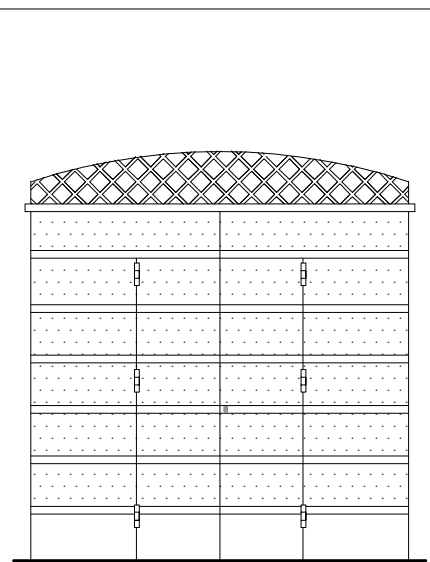
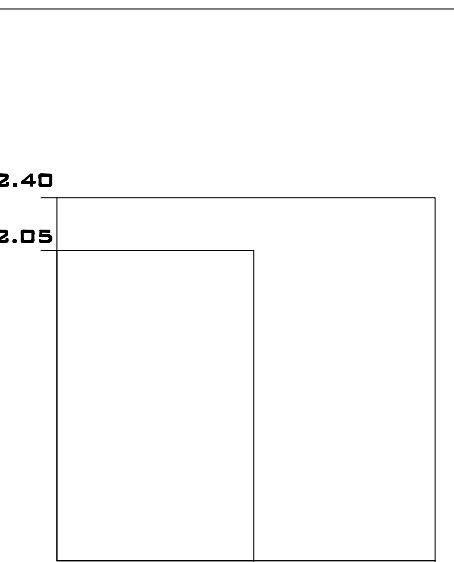
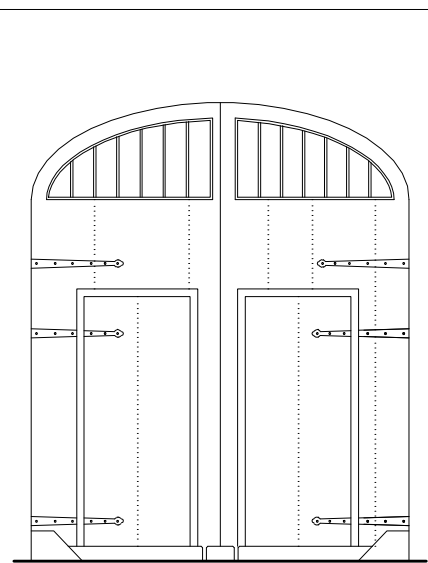
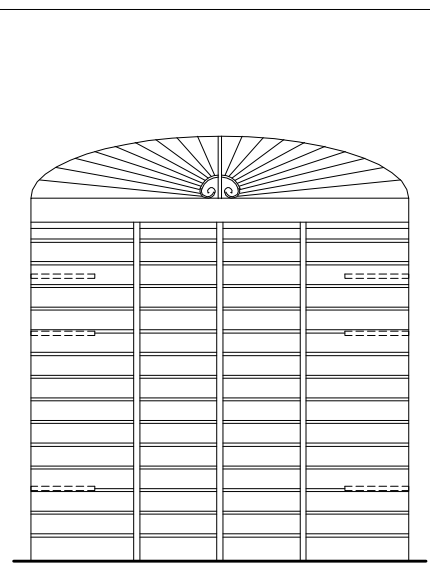
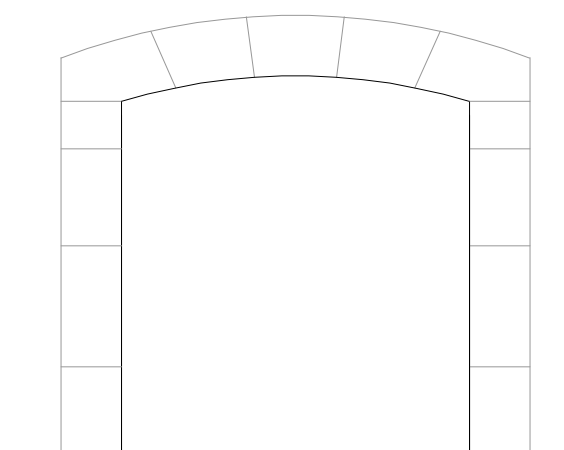


INFISSI E SERRAMENTI

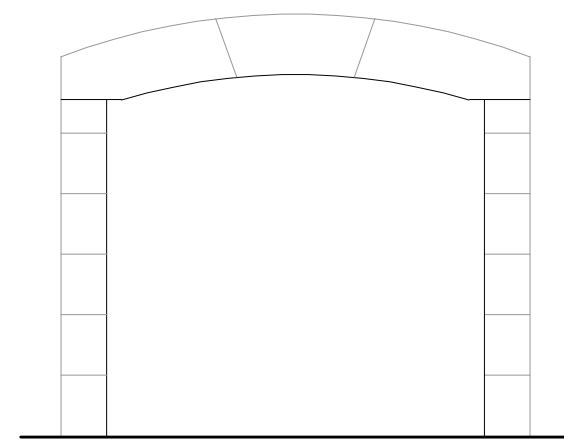
A- LEGNO	B- LEGNO CON SOPRALUCE	C- METALLO	D- METALLO CON SOPRALUCE	RANGE DIMENSIONALE
				
1	1	1	1	
				
2	2			

SCALA 1:50

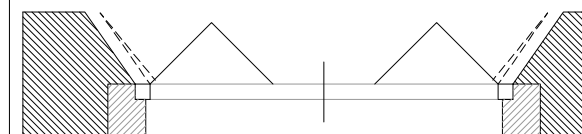
DETTAGLIO PORTALI



1



2



SCALA 1:50



C&B
ASSOCIATI

46, v.le Campania, 90144 Palermo
tel. 091.522566 fax 091.528109
E-mail girbell@tin.it

Progettista :
Girolamo Bellomo
- architetto -

Collaborazioni :
arch. A. Peri
geom. C. Lo Galbo
G. Bellomo
M. Sardisco
Ricerca Storico-filologica :
Lory Cacia - UNI.PA

provincia di Enna
CERAMI
PIANO REGOLATORE GENERALE
PRESCRIZIONI ESECUTIVE
REGOLAMENTO EDILIZIO

PRESCRIZIONI ESECUTIVE
DDG 1016/DRU 2009

data consegna
p.r.g. di massima

data consegna
p.r.g.

data consegna
rielaborazione
DDG 1016/2009
16-02-2010

oggetto della tavola
INGRESSI CARRABILI
- ABACO -

data trasmissione
A.R.T.A.

scala
1:50



IL SINDACO
IL CAPO U.T.C.

Tipo elaborazione
P.E.

tavola n.
7.11

pratica n.
219